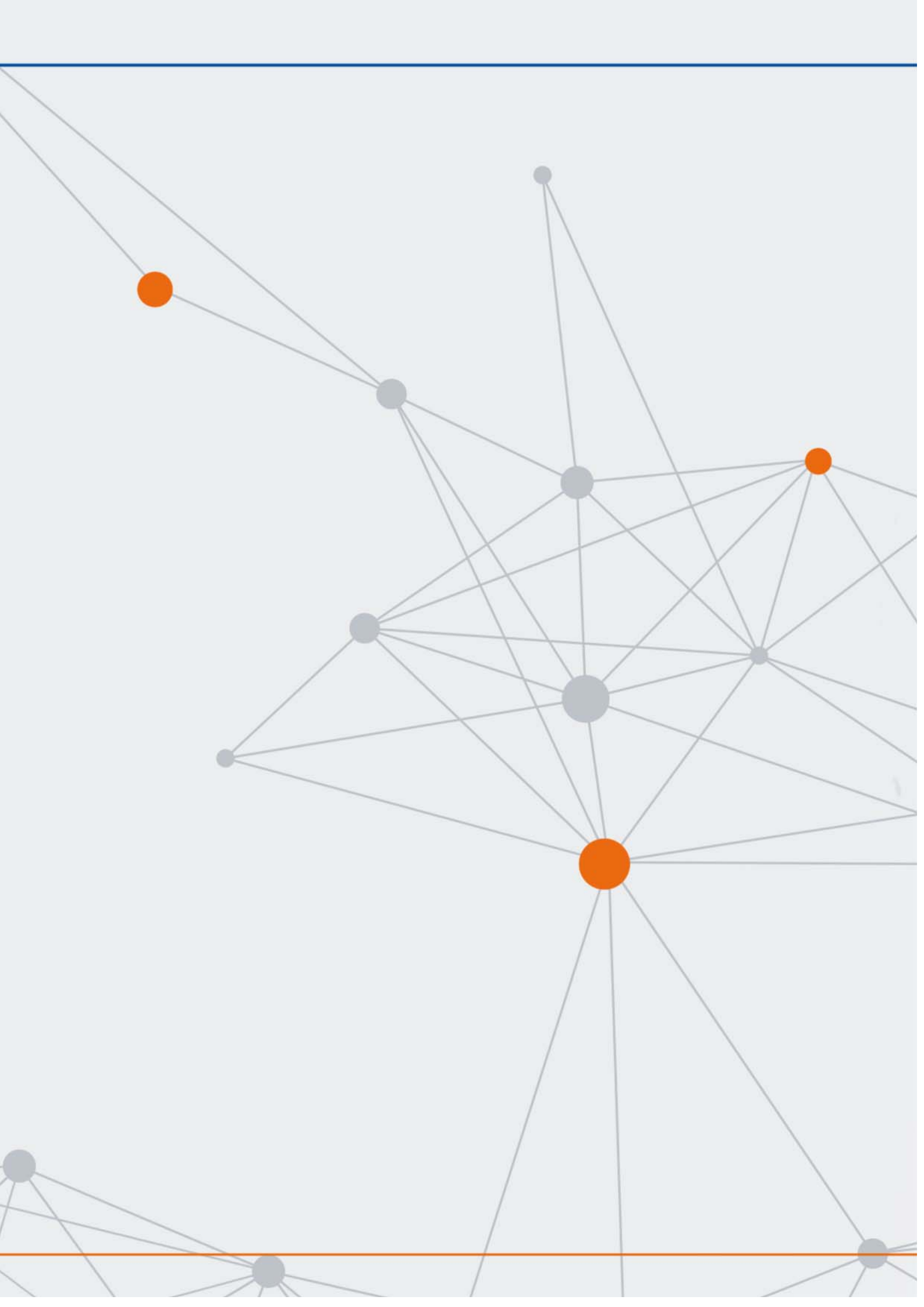




SPINELLI

FIXING LEVELLERS





FIXING LEVELLERS

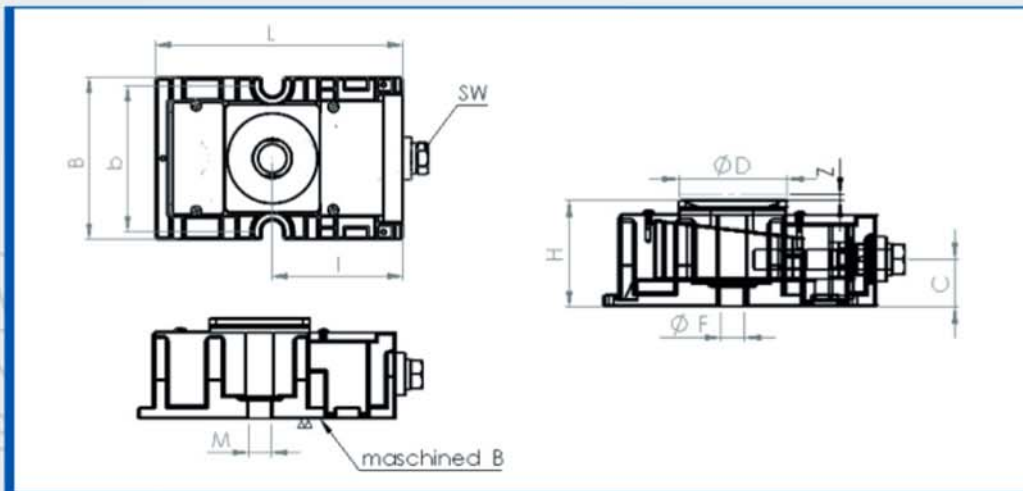
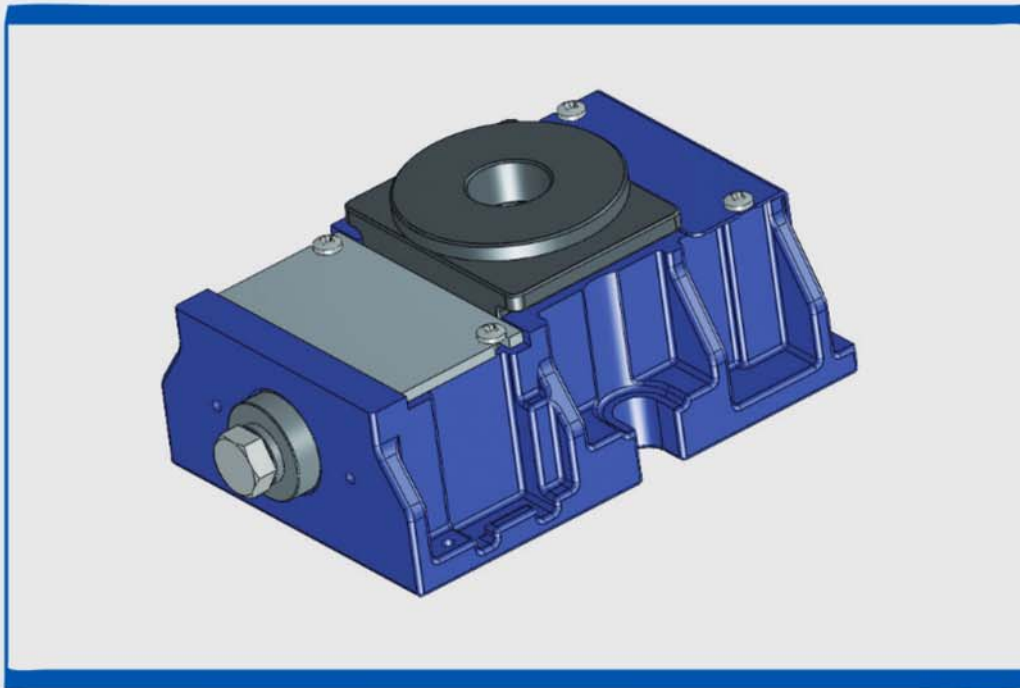
WSP





ARTICLE	MAX LOAD KN	NOMINAL LOAD KN
WSP I	90	10
WSP II	120	20
WSP III	240	40
WSP IV	360	60
WSP V	700	120
WSP VI	1200	200

The choice of the cylinder is made considering that the load is greater than or equal to the nominal maximum load of the agent during operation of the machine. The maximum permissible load is used to verify that the cylinder is not damaged by accident during the leveling of the bed of the machine during installation.



WSP	L	B	H	DØ	SW	c	z	l	B
I	175	105	55	60	19	23	5	92	94
II	180	120	78	75	19	32	5	96	100
III	225	150	100	90	24	42	6	118	130
IV	275	180	120	110	30	47	8	143	160
V	345	230	140	150	36	65	10	180	205
VI	425	275	160	200	46	67	13	230	245

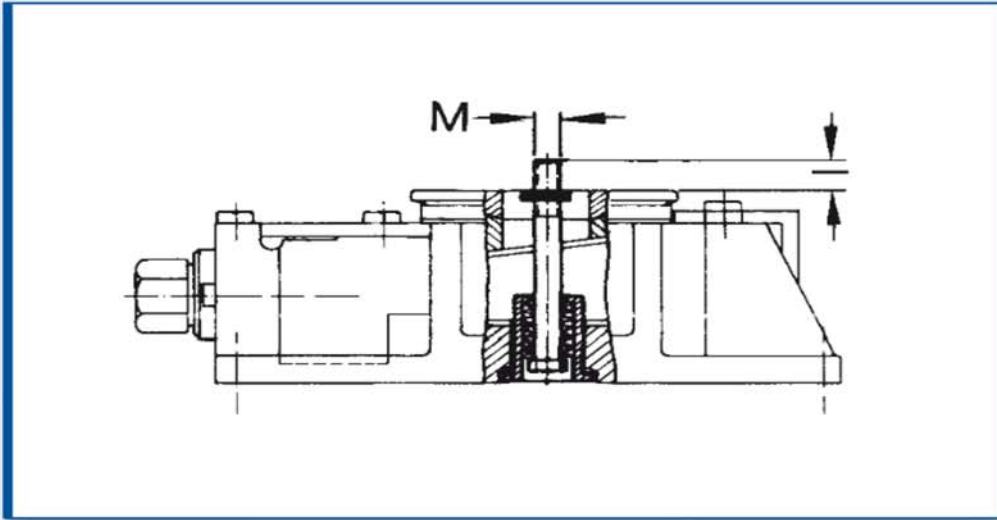
VARIANT K
M 16
M 20
M 24
M 30
M 36 - M 42
M 42

VARIANT Ø F	
Ø F1	Ø F2
17	19
22	26
26	32
32	36
36	45
55	/



MACHINE FIXATORS			WSP I	WSP II	WSP III	WSP IV	WSP V	WSP VI
TORQUE MOMENT ADJUST. SCREW	SPECIFIC	N m/Kg 1.000	3	3	4	4,5	5,5	7
	MAXIMUM	N m	27	36	96	160	385	700
	SECURITY	N m	2,5 - 5	2,5 - 5	3,5 - 7	4 - 8	5 - 10	20
MAXIMUM VERTICAL ADJUSTMENT		mm	5	5	6	8	10	13
ADJUSTMENT SCREW AROUND		mm	0,25	0,25	0,29	0,35	0,43	0,5
LEVELLER'S WEIGHT		Kg	4	6	12	22	42	75

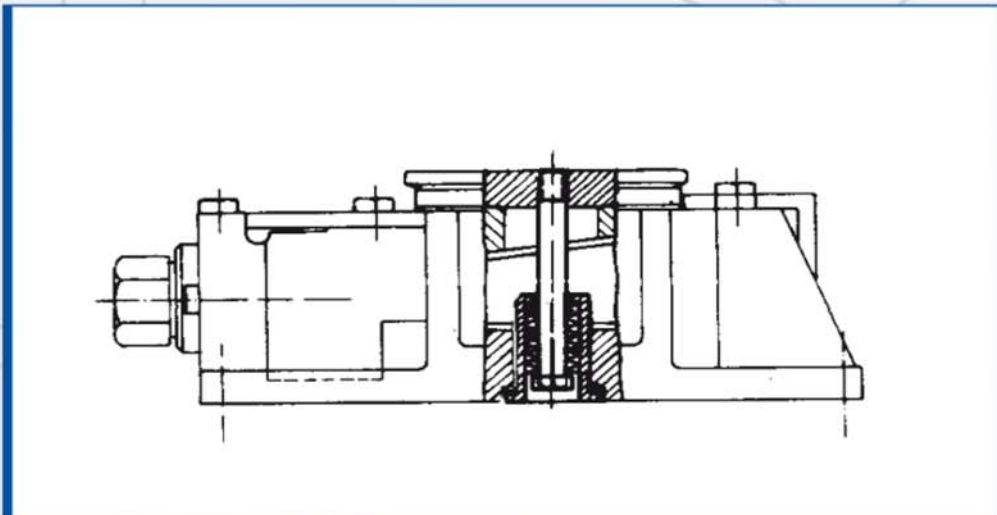
WSP/F MOUNTING POSITIONS VARIABLE



MEASURE	M	I
I	6	8
II	6	8
III	8	8
IV	8	8
V	8	8

Note: All dimensional units are millimeters

WSP/M PROTECTION OF THE SPHERICAL WASHER





FIXING LEVELLERS

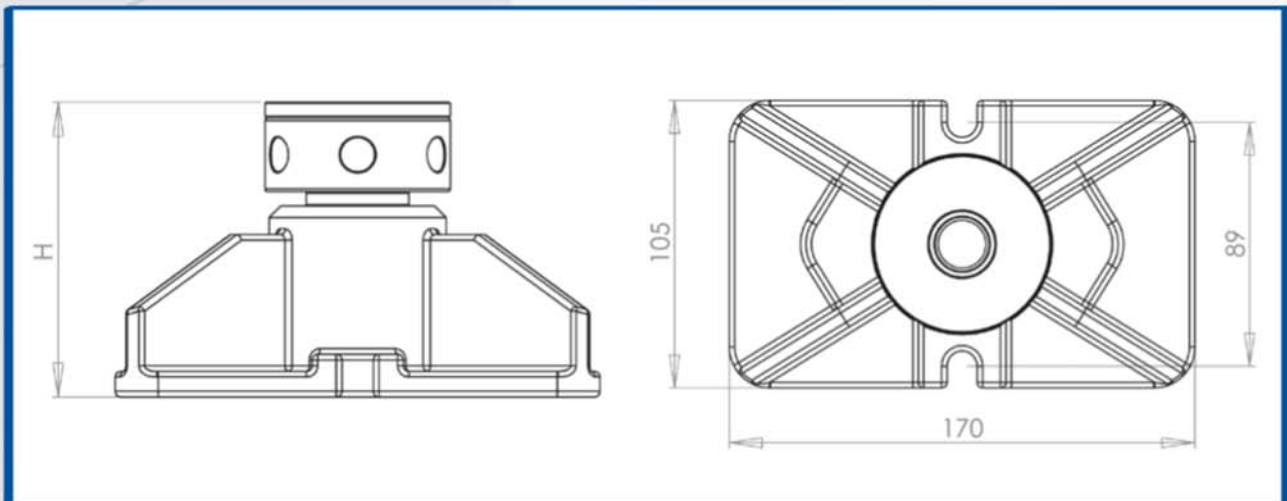
DS

ES

MS

ALS



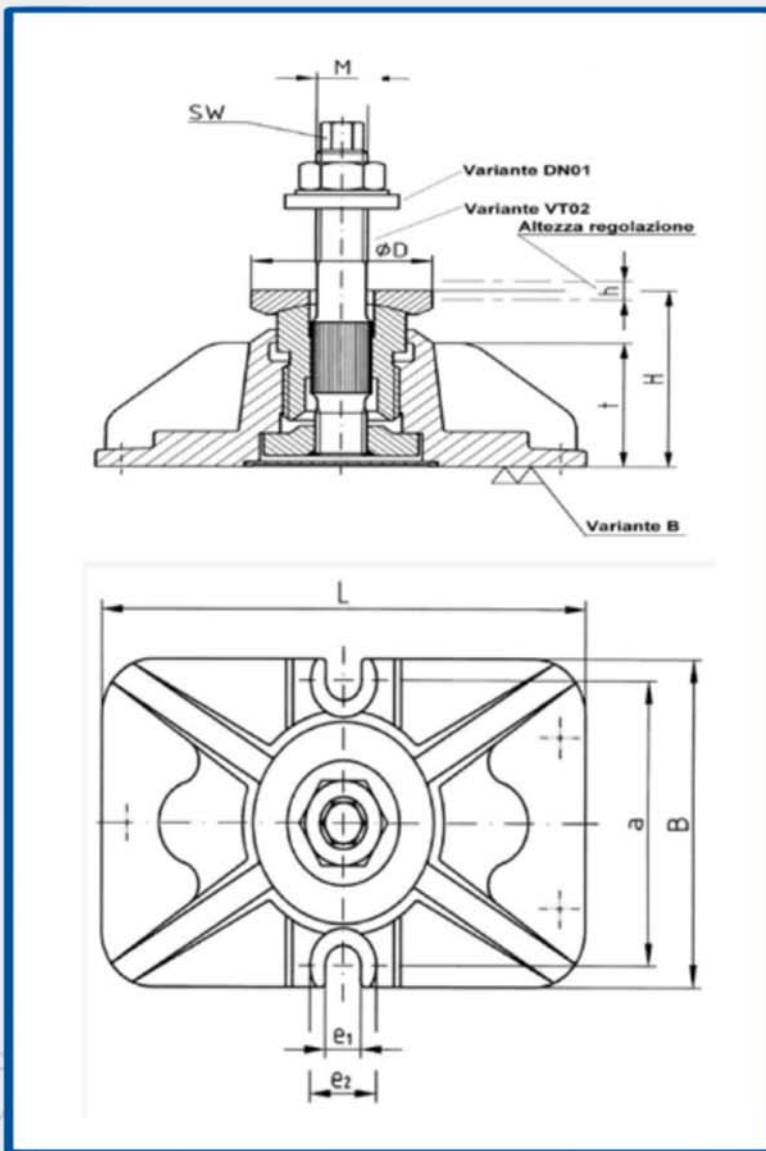


BASIC DIMENSIONS	170 X 106 mm
MINIMUM HIGH	H 95 mm
MAXIMUM HIGH	H 130 mm
MAXIMUM FORCE ALLOWED	20 KN
TORQUE MOMENT	60 Nm/to
HIGH ADJUSTABLE LAP	1,5 mm
LEVELLER'S WEIGHT	2,5 Kg

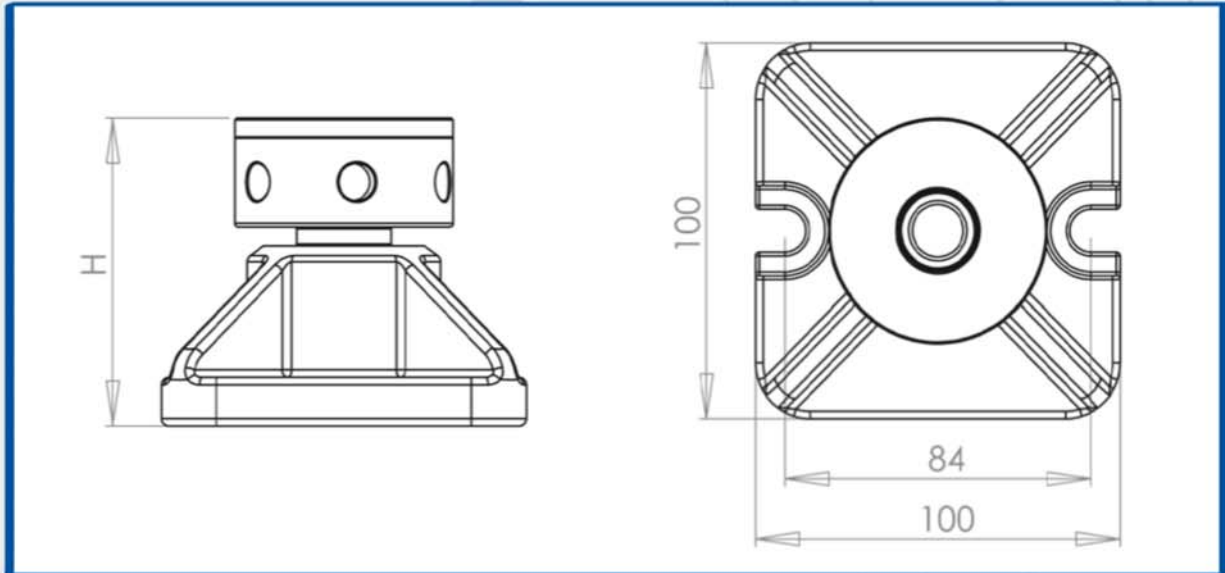
The DS leveller allows an horizontal leveler with a higher lift.



ARTICLE	MAX LOAD KN	NOMINAL LOAD KN
ES I	90	10
ES II	120	20
ES III	240	40
ES IV	360	60
ES V	600	100



ES	L	B	H	D ϕ	h	T
I	170	110	80	60	8	60
II	170	115	95	70	10	70
III	220	140	115	80	12	85
IV	280	190	140	100	16	100
V	330	230	170	125	20	125



BASIC DIMENSIONS	100 X 100 mm
MINIMUM HIGH	H 75 mm
MAXIMUM HIGH	H 105 mm
MAXIMUM FORCE ALLOWED	10 KN
TORQUE MOMENT	45 Nn/to
HIGH ADJUSTABLE LAP	1,5 mm
LEVELLER'S WEIGHT	1,6 Kg

The MS leveller is used to level radial drills, lathes, transfer etc.



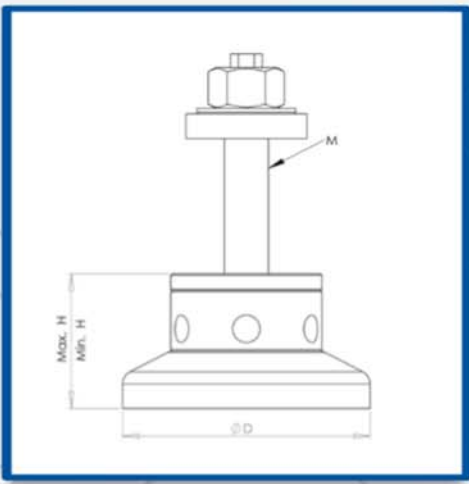
ALS 1

BASIC DIMENSIONS	DIAM.90H 50 mm
MINIMUM HIGH	H 50 mm
MAXIMUM HIGH	H 60 mm
MAXIMUM FORCE ALLOWED	10 KN
CENTRAL PIVOT	M16 X 130 mm
HIGH ADJUSTABLE LAP	1,5 mm

ALS 1 levels small machine tools in an easy way with accuracy.

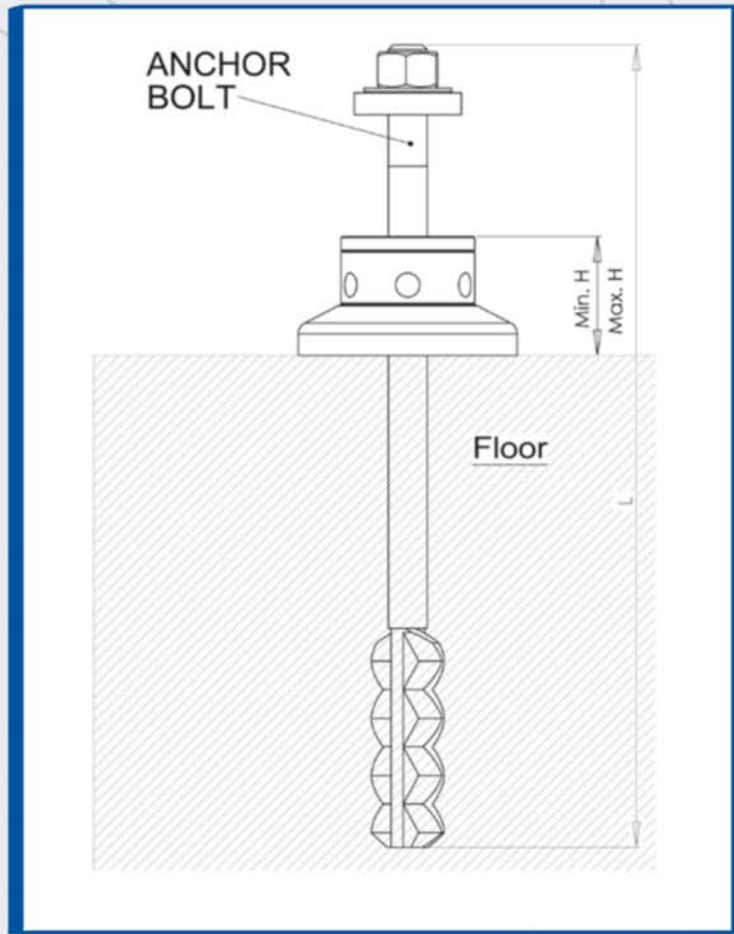
ALS 2

BASIC DIMENSIONS	DIAM.110H 55 mm
MINIMUM HIGH	H 55 mm
MAXIMUM HIGH	H 70 mm
MAXIMUM FORCE ALLOWED	20 KN
CENTRAL PIVOT	M20 X 180 mm
HIGH ADJUSTABLE LAP	1,5 mm



ALS 2 is used to level the machine tools of medium dimension with the best easy way with accuracy.

ALS 1 - ALS 2 LEVELER WITH ANCHOR BOLT



ALS 1	ZKA M 16	L = 330
ALS 2	ZKA M 20	L = 400



FIXING LEVELLERS

CSP

CZP





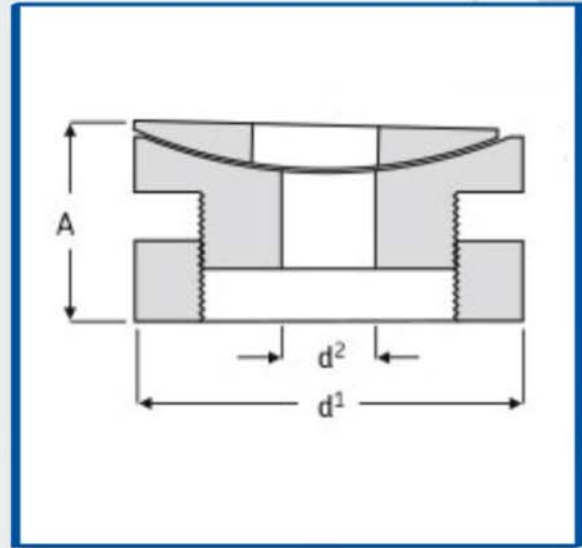
ARTICLE	MACHINE LOAD	MAX LOAD ELEMENT
CSP 16	15 KN	90 KN
CSP 20	25 KN	140 KN
CSP 24	35 KN	200 KN
CSP 30	60 KN	320 KN
CSP 36	90 KN	470 KN
CSP 42	120 KN	670 KN
CSP 48	160 KN	850 KN
CSP 55	220 KN	1100 KN
CSP 65	300 KN	1500 KN

Spinelli Sas' CSP base are adjustable elements of universal support made in steel and/or iron C45 that are very useful with the alignment of the axle and the machine installation; they also avoid the use of thicknesses.

CSP's bases can be used to re-register when necessary and for specific applications

You can use CSP for power supply, compressor, turbine and pump to remove any traditional problem for the alignment work

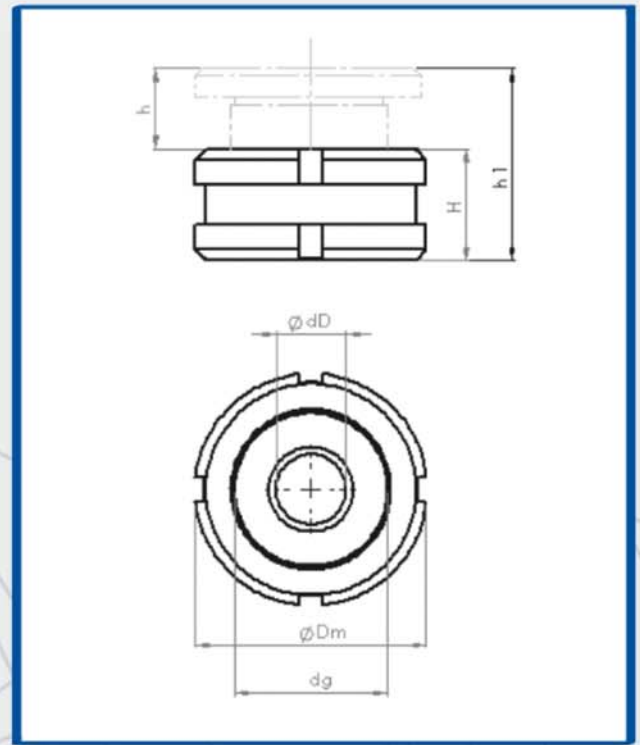
Thanks to CSP bases you can reduce more than 50% the time for alignment and leveling the structure, so you can avoid the possible intervention on the foundation and the thicknesses' use. We suggest to use the "laser station" for this kind of operation.



ARTICLE	A min.	A max	d 2	D 1
CSP 16	35	45	21	80
CSP 20	40	50	25	100
CSP 24	45	57	31	120
CSP 30	50	62	37	140
CSP 36	55	67	44	150
CSP 42	60	72	50	200
CSP 48	70	85	60	220
CSP 55	75	90	66	220
CSP 65	80	95	74	250

The advantages and characteristics of Spinelli Sas' CSP are:

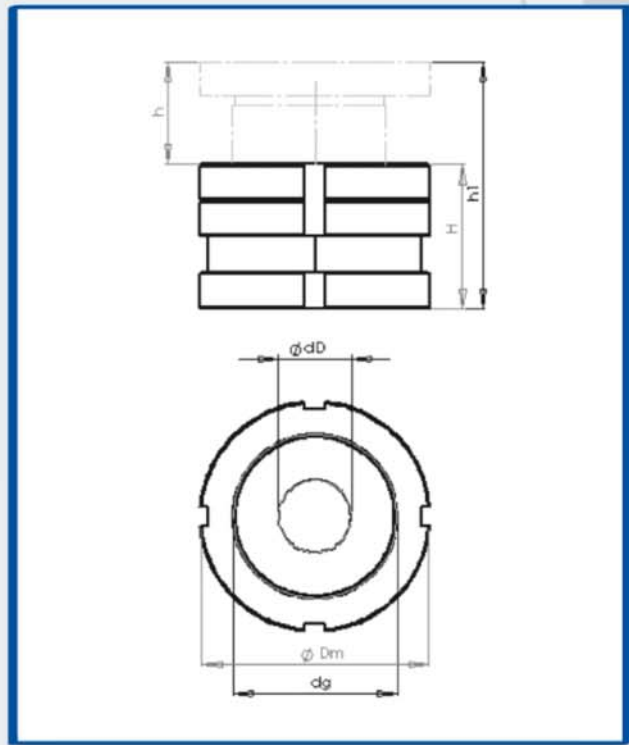
- Suitable materials to the required functionality
- Expected correction of the required or to be reached angle
- Wide range of measurement and levels of regulation
- Easy to use
- Improvement of installation's time
- Possibility of personalized specification under customer's request



The regulator CZP has been projected to be used for application in tighter spaces with adjustment between 4 mm and 14 mm

ARTICLE	\varnothing hole	H mm	h1 mm	h mm	$\varnothing Dm$ mm	d_g	Dd mm	machine load KN
CZP NX 25 - 4,5 CZP NX 25 - 5,5 CZP NX 25 - 6,5	M4 M5 M6	15	19	4	25	M15 x1	4,5 5,5 6,5	10
CZP NX 32 - 6,5 CZP NX 32 - 9 CZP NX 32 - 11	M6 M8 M10	18	23	5	32	M20 x1	6,5 9 11	15
CZP NX 45 - 11 CZP NX 45 - 13,5 CZP NX 45 - 17,5	M10 M12 M16	22	29	7	45	M30 x1,5	11 13,5 17,5	20
CZP NX 58 - 17,5 CZP NX 58 - 22 CZP NX 58 - 26	M16 M20 M24	28	37	9	58	M40 x1,5	17,5 22 26	25
CZP NX 70 - 22 CZP NX 70 - 26 CZP NX 70 - 33	M20 M24 M30	33	43	10	70	M50 x1,5	22 26 33	30
CZP NX 80 - 26 CZP NX 80 - 33 CZP NX 80 - 39	M24 M20 M36	38	50	12	80	M60 x1,5	26 33 39	35
CZP NX 105 - 39 CZP NX 105 - 45 CZP NX 105 - 52	M36 M42 M48	48	62	14	105	M80 x2	39 45 52	40

article made in galvanized C45 - code CZP NR



The precision adjuster with lock-nut CZP/G the adjustment stroke is included between 4mm and 14mm. It is used in dynamic load applications where mounting bolts are not used.

ARTICLE	Ø hole	H mm	h1 mm	h mm	Ø Dm mm	dg	Dd mm	machine load KN
CZP/G NX 25 - 4,5	M4	20	24	4	25	M15 x1	4,5	10
CZP/G NX 25 - 5,5	M5						5,5	
CZP/G NX 25 - 6,5	M6						6,5	
CZP/G NX 32 - 6,5	M6	25	30	5	32	M20 x1	6,5	15
CZP/G NX 32 - 9	M8						9	
CZP/G NX 32 - 11	M10						11	
CZP/G NX 45 - 11	M10	30	35	7	45	M30 x1,5	11	20
CZP/G NX 45 - 13,5	M12						13,5	
CZP/G NX 45 - 17,5	M16						17,5	
CZP/G NX 58 - 17,5	M16	40	49	9	58	M40 x1,5	17,5	25
CZP/G NX 58 - 22	M20						22	
CZP/G NX 58 - 26	M24						26	
CZP/G NX 70 - 22	M20	45	55	10	70	M50 x1,5	22	30
CZP/G NX 70 - 26	M24						26	
CZP/G NX 70 - 33	M30						33	
CZP/G NX 80 - 26	M24	50	62	12	80	M60 x1,5	26	35
CZP/G NX 80 - 33	M20						33	
CZP/G NX 80 - 39	M36						39	
CZP/G NX 105 - 39	M36	65	79	14	105	M80 x2	39	40
CZP/G NX 105 - 45	M42						45	
CZP/G NX 105 - 52	M48						52	

article made in galvanized C45 - code CZP/G NR



ACCESSORIES

SERVICES



ANCHOR BOLT SCH1



ANCHOR BOLT ZKA

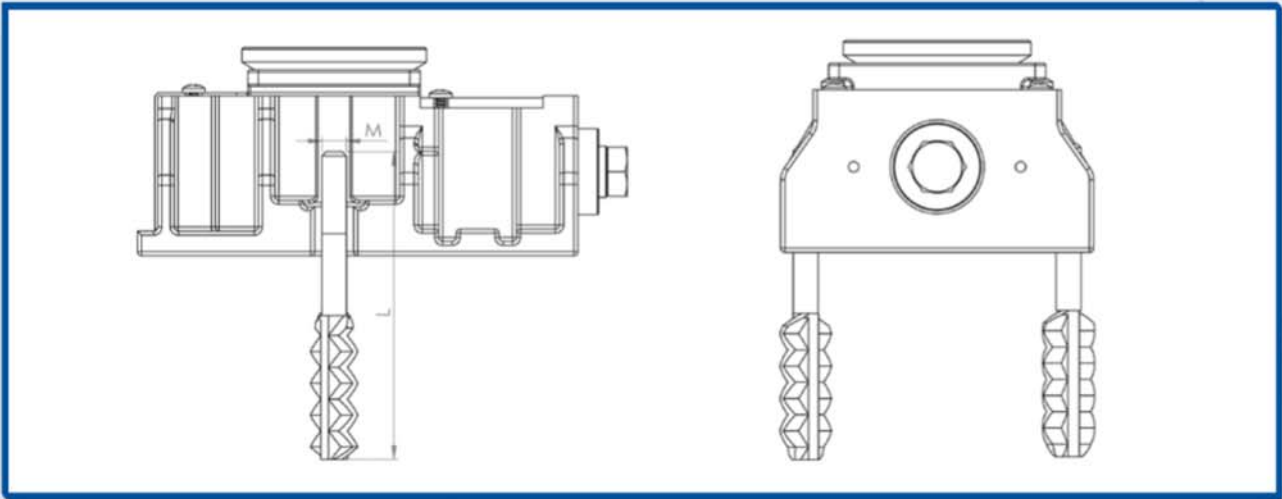


M	L	D	C	I	I+	ØD	ØD1
16	250	26	85	55		16	
16	330	26	85	55	40	16	12
20	400	40	110	65	85	20	15
24	500	48	140	75	115	24	18
30	600	62	170	80	135	30	23
36	800	90	180	90	155	36	28
42	1000	105	250	100	180	42	35

STOP RING	O-RING	MAX. FORCE KN
20 x 16,5 x 10	16 x 5	53
30 x 20,5 x 12	20 x 5	81
35 x 24,5 x 14	24 x 5	115
42 x 30,5 x 15	30 x 5	182
45 x 36,5 x 16	36 x 5	265
55 x 42,5 x 16	42 x 5	385

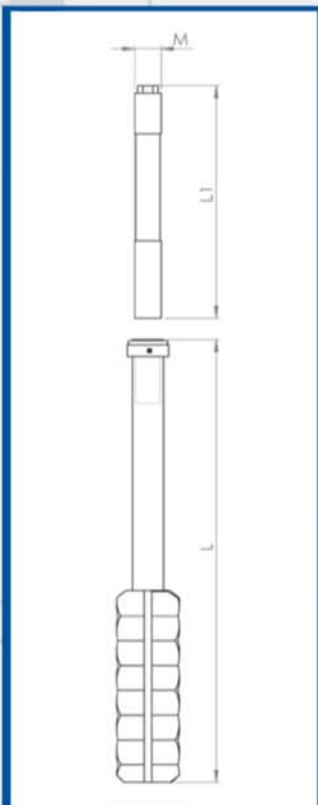
Note: All dimensional units are millimeters

ANCHOR BOLT ZKA/2



M	L
M 12	150
M 16	250
M 20	300
M 24	350

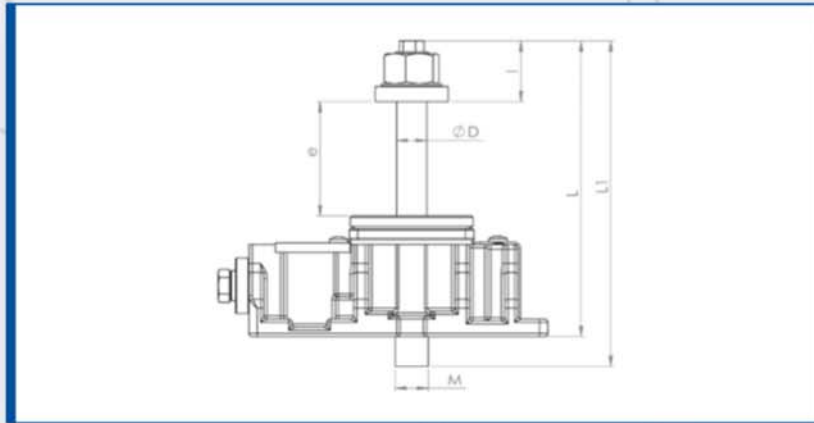
ANCHOR BOLT SCH2



ANCHOR BOLT SCH2	M	L
I	M 16	190
II	M 20	275
III	M 24	360
IV	M 30	450
V	M 36	600

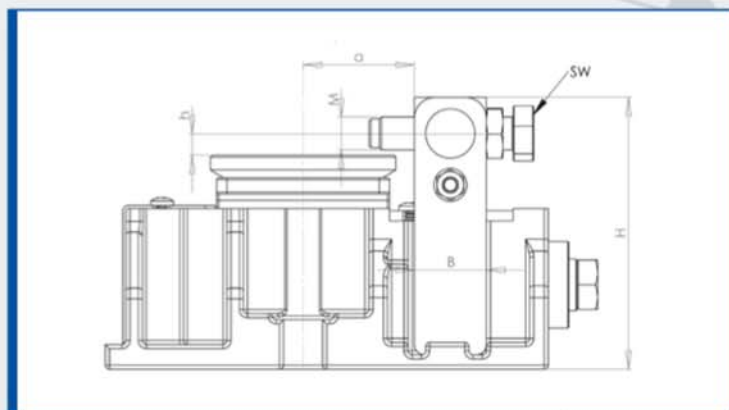
Note: All dimensional units are millimeters

ANCHOR BOLT VT01



WSP	M	D Ø	L	L1	I	e	
						from	to
I	M 16	14	130	150	30	40	60
II	M 20	18	175	205	35	50	86
III	M 24	21	215	260	50	65	115
IV	M 30	27	260	310	55	80	135
V	M 36	32	310	360	65	100	150

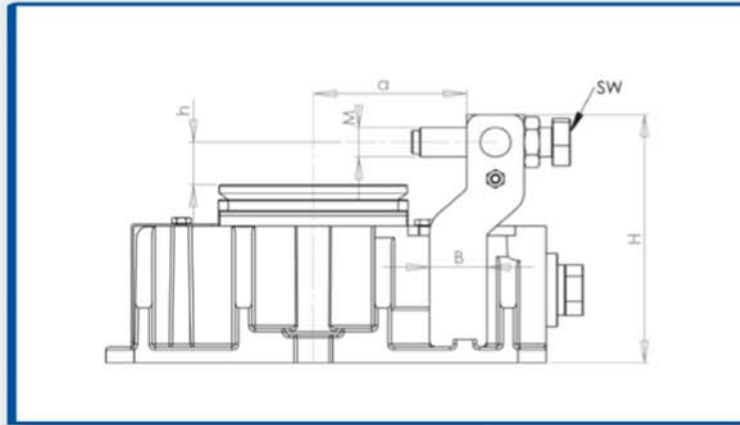
VARIANT SP1



WSP	M	H	B	SW	a	h
I	M 12	85	25	17	40	15
II	M 16	105	30	19	45	18
III	M 16	130	35	19	55	18
IV	M 20	160	40	30	70	22
V	M 24	190	45	36	90	25

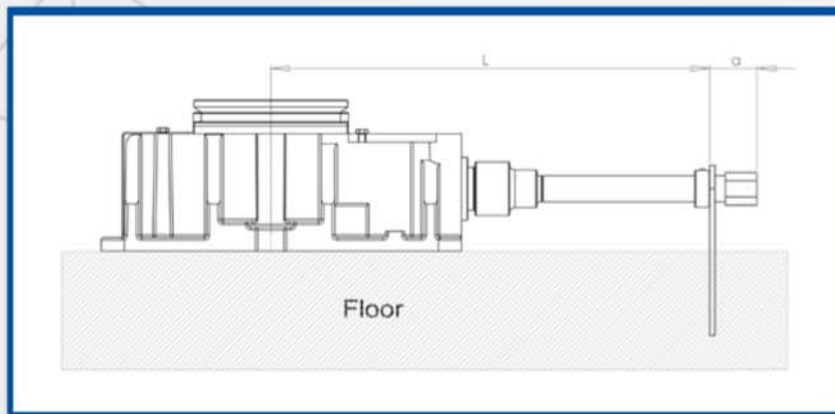
Note: All dimensional units are millimeters

VARIANT SP2



WSP	M	H	B	SW	a	h
I	M 12	85	25	17	55	15
II	M 16	105	30	19	65	18
III	M 16	130	35	19	80	18
IV	M 20	160	40	30	100	22
V	M 24	190	45	36	120	25

EXTENSION LG01

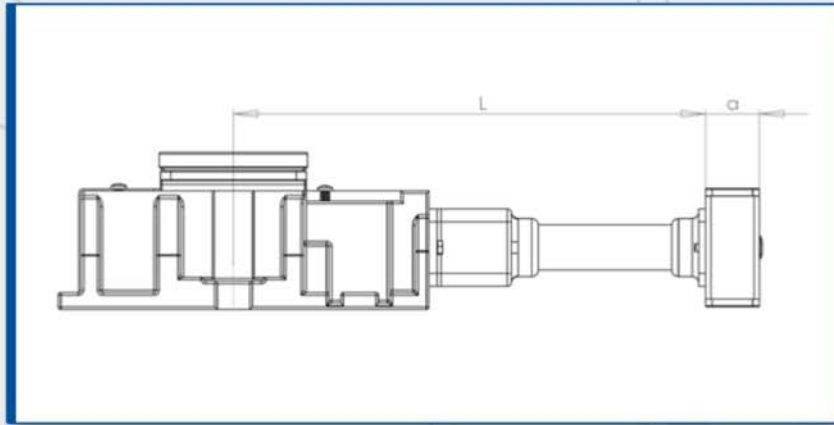


WSP	L = Min. Dim.	a	SW
I	130	50	24
II	140	50	24
III	170	50	27
IV	200	50	30
V	250	50	30

Note: All dimensional units are millimeters

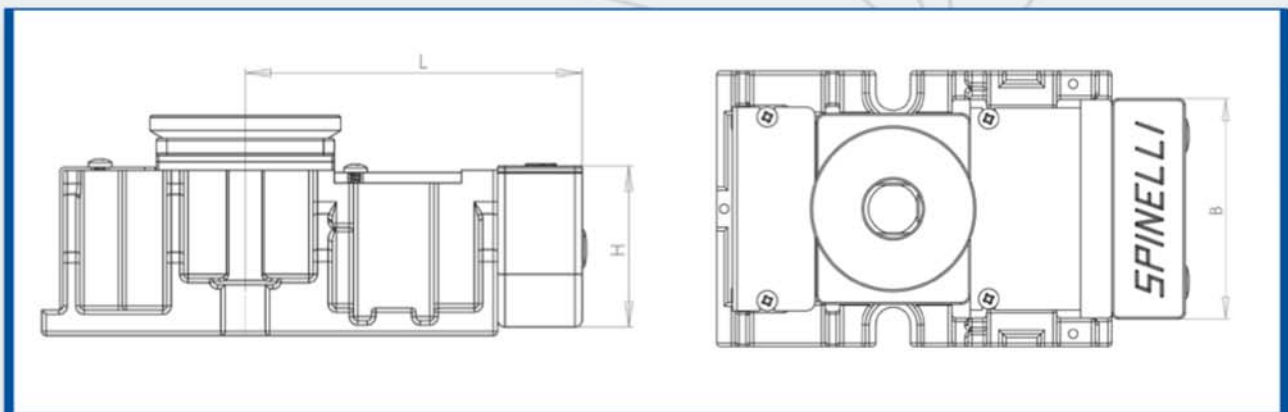
Holes in the plate on request to your design.

EXTENSION LG02



WSP	L = Min. Dim.	a	SW
I	150	30	24
II	150	30	24
III	180	40	27
IV	200	40	30
V	250	40	30

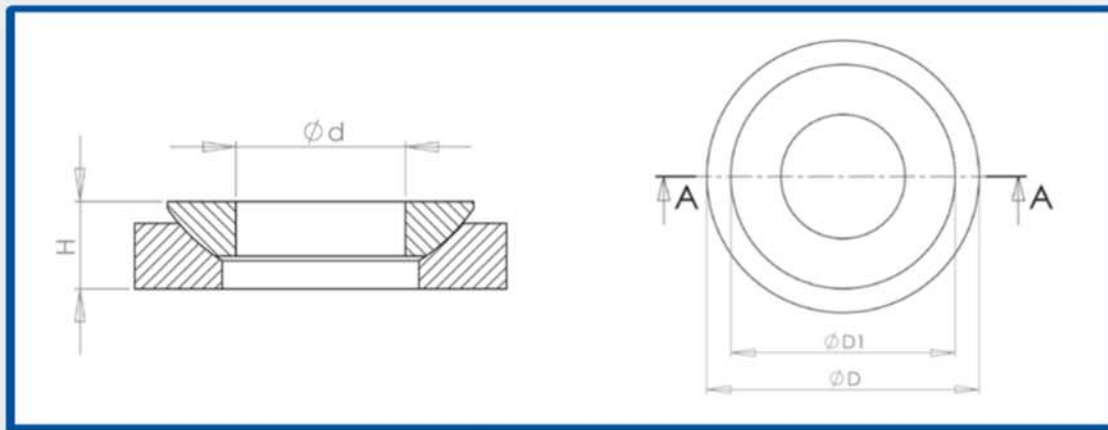
COVER BOX PH01



WSP	L	B	H
I	122	80	45
II	126	120	55
III	158	120	75
IV	183	120	75
V	220	120	100

Note: All dimensional units are millimeters

SPHERICAL WASHER DN01 - DN02



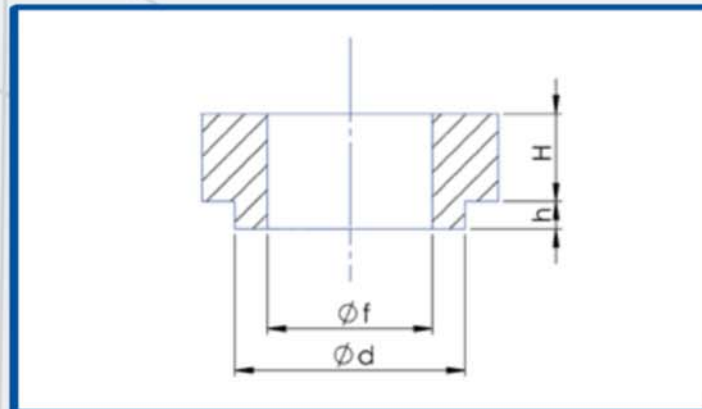
DN01

MEASURE	ϕD	H	ϕd	ϕb
I	40	10	35	19
II	45	10	35	22
III	55	15	45	26
IV	65	18	55	32
V (M 36)	75	20	65	38
V (M 42)	100	25	90	45

DN02

MEASURE	ϕD	H	ϕd	ϕb
I	45	10	35	19
II	55	10	35	22
III	65	15	45	26
IV	75	18	55	32
V (M 36)	100	20	65	38
V (M 42)	125	25	90	45

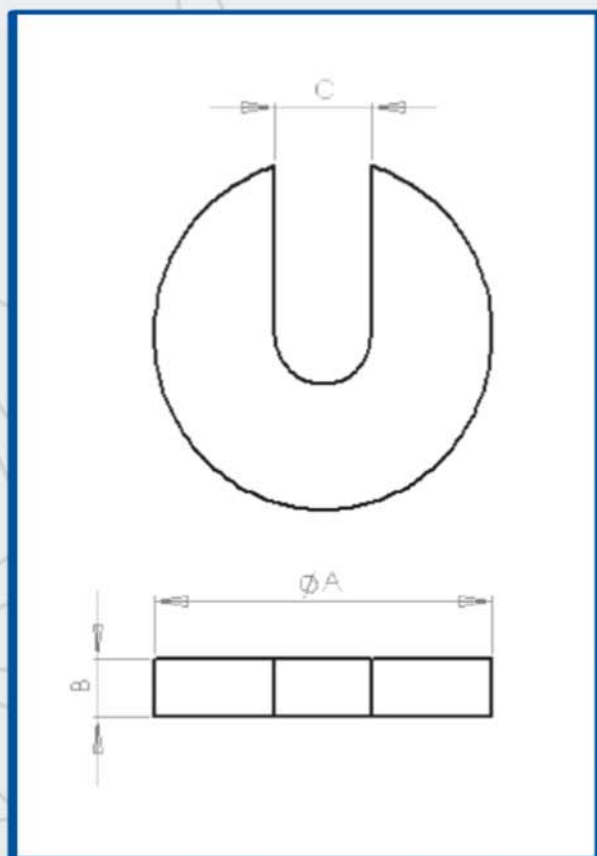
CENTERING COMPASS ZP



MEASURE	ϕD	H	ϕf	ϕd	h
I	32	13	16,2	22	4
II	40	14	20,2	28	4
III	44	18	24,2	32	5
IV	54	21	30,2	42	5
V (M 36)	60	26	36,3	45	6
V (M 42)	70	32	42,5	56	6

Note: All dimensional units are millimeters

THICKNESS ADJUSTMENT



$\varnothing A$	C	B THICKNESS mm					
60	17	0,5	1	2	4	6	10
65	21	0,5	1	2	4	6	10
75	21	0,5	1	2	4	6	10
90	25	0,5	1	2	4	6	10
110	31	0,5	1	2	4	6	10
150	41	0,5	1	2	4	6	10

SUPPORT FOR ALIGNMENT



SUPPORT FOR ALIGNMENT CP55/65

Support for alignment CP 55/65 is suitable for loads of up to 30 t/m².

The complete support for alignment consists of a foundation anchor which is poured into the concrete and the actual adjustment element which is screwed into the plates. With this element, the plate can be firmly anchored in the foundation and precisely adjusted in regard to tension and pressure.

The scope of delivery comprises the complete element including the foundation anchor and steel cover for the tooling plate. Subsequent realignment of the plate towards the engine bed is possible at any time from the plate surface.



Spinelli in addition to producing leveling machine tool quality has specialized, for a decade now, in their installation in pre-assembly phase.

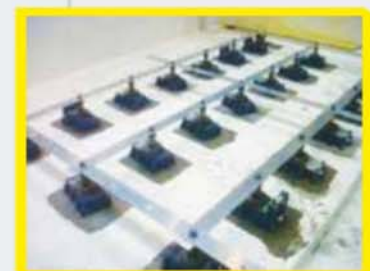
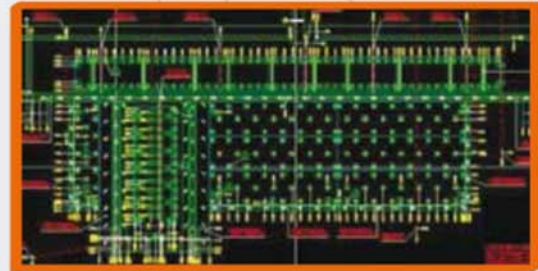
Manufacturers and installers know this system for the following advantages:

- Savings
- Reduced assembly time of the machine
- Ensuring better performance of the jet grouting of leveling
- Possibility of complete waterproofing and painting of the foundation.

Spinelli is also able to build foundations "turnkey" by running:

- Geological
- Engineering and static calculations
- Performance jets
- Waterproofing and painting
- Laying leveling
- Static testing

We installed in EUROPE, UNITED STATES, CHINA.





Certificate

Standard **ISO 9001:2015**

Certificate No. 39 00 1591509

TÜV Rheinland Italia S.r.l. certifies:

Certificate Holder: **Spinelli Accessori Macchine Utensili S.a.S. Di Spinelli D. & C.**

Via E. Fermi, 3
23897 Viganò (LC)
Italy

Scope: Design and construction of levelling systems and devices for plant and machinery

IAF sector: 17

Proof has been furnished by means of an audit that the requirements according to ISO 9001:2015 are fulfilled.

The due date for all future audits is 11-30

Validity: The certificate is valid from 2019-01-25 until 2022-01-13
First certification 2016

2019-01-25


TÜV Rheinland Italia S.r.l., Via E. Mattei, 3
I - 20010 Pogliano Milanese (MI)

www.tuvitalia.com



ISO 9001:2015
Member degli Accordi di Mutuo Riconoscimento EA, IAF e ILAC
Signatory of EA, IAF and ILAC Mutual Recognition Agreement

 **TÜVRheinland®**
Precisely Right.



ISTITUTO PER LA TUTELA DEI PRODUTTORI ITALIANI

Made in Italy 100% Certificate

REGISTRAZIONE N° IT01.IT/2274.100.V

SI ATTESTA CHE
This is to certify that

SPINELLI

E' UN MARCHIO CERTIFICATO AVENTE I REQUISITI DEL
SISTEMA IT01 - 100% QUALITA' ORIGINALE ITALIANA
acts according to system IT01 - 100% Original Italian Quality

QUESTA CERTIFICAZIONE E' INOLTRE VALIDA PER IL SEGUENTE CAMPO APPLICATIVO:
This certificate is also valid for the following product or service range:

LIVELLATORI ED ACCESSORI PER MACCHINE INDUSTRIALI
Levellers and accessories for industrial machines

DITTA PRODUTTRICE E DISTRIBUZIONE:
Manufacturer and distribution Company:

SPINELLI ACCESSORI MACCHINE UTENSILI SAS
Via E. Fermi, 3 - 23897 Viganò (LC)

SISTEMA IT01 - 100% QUALITA' ORIGINALE ITALIANA
The certified Company:

Questi prodotti sono:

- A - IDEATI E FABBRICATI INTERAMENTE IN ITALIA
- A.1 - Ideati con disegni e progettazioni esecutive dell' Azienda
- A.2 - Completamente realizzati in Italia
- A.3 - Realizzati con fornitori italiani
- A.4 - Con tracciabilità delle lavorazioni
- B - COSTRUITI CON MATERIALI NATURALI DI QUALITÀ
- B.1 - Materiali naturali individuali o composti
- B.2 - Materiali di qualità e prima scelta per l'uso previsto
- B.3 - Con tracciabilità della provenienza delle materie prime
- C - COSTRUITI SU LAVORAZIONI TRADIZIONALI TIPICHE
- C.1 - Particolari lavorazioni artigianali
- C.2 - Utilizzo di tecniche tradizionali tipiche
- D - REALIZZATI NEL RISPETTO DEL LAVORO IGIENE E SICUREZZA
- D.1 - Realizzati nel pieno rispetto del lavoro
- D.2 - A tutela igiene sanità e sicurezza su luoghi e prodotti

Products must be:

- A - DESIGNED AND MANUFACTURED ENTIRELY IN ITALY
- A.1 - Based on Company's own project and design
- A.2 - Fully manufactured in Italy
- A.3 - Made with Italian Components
- A.4 - Complete with traceability in Italy
- B - MADE WITH QUALITY NATURAL MATERIALS
- B.1 - Natural materials or Natural compounds
- B.2 - Quality, first choice materials
- B.3 - Raw materials's origin Full traceability
- C - BUILT ACCORDING TO TRADITIONAL WORKING METHODS
- C.1 - Use of the company's specific Workmanship
- C.2 - Use of traditional Workmanship techniques
- D - MADE IN OBSERVANCE OF EMPLOYEES, HEALTH AND SAFETY STANDARDS
- D.1 - Ethical treatment of Employees
- D.2 - Manufactured according to the Hygiene, Healthcare and Safety regulations

Organismo Asservante:
Supporting unit:
PROMINDUSTRIA SPA




WALTER MARTINI
President

Stampa e timbro
Timbro dell'Istituto


NAZZARENO VITA
Director

MILANO, 23/10/2020

LA VALIDITA' DEL PRESENTE CERTIFICATO MADE IN ITALY E' SUBORDINATA AL RIESAME COMPLETO DEL SISTEMA CON PERIODICITA' ANNUALE
The validity of this Made in Italy Certificate is subjected to a periodical complete annual inspection



SUPERIOR SOLUTION



SPINELLI SRL ACCESSORI MACCHINE UTENSILI



Via Enrico Fermi, 3
23897 VIGANÓ (LC)
ITALY



+39 039.92.17.316



info@spinellisas.eu



www.spinellisas.eu

VAT No.: IT05069080967